



Did you know?

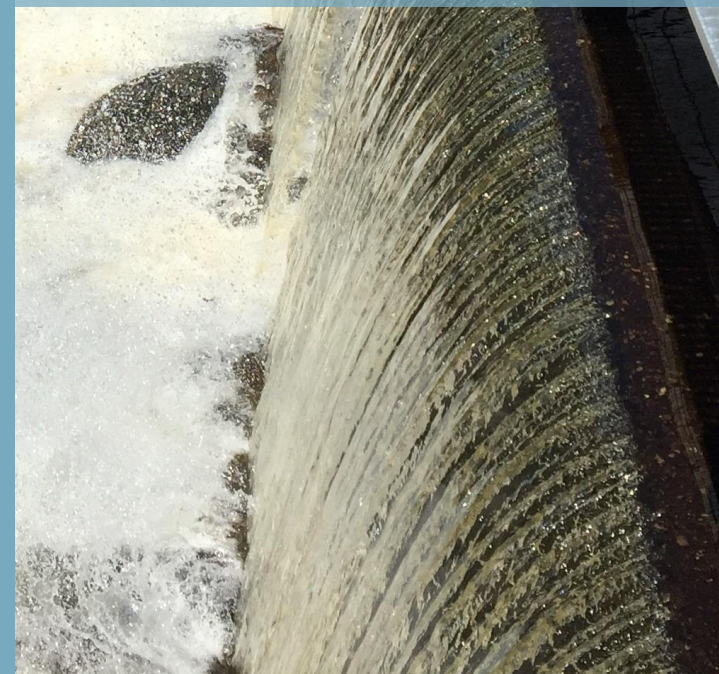
It takes approximately 20-25 minutes for the lock to drain or fill up with water. Please be patient while going through the lock!

Municipality of Magnetawan

4304 HWY #520
Magnetawan, ON
POA 1P0
(705) 387-3947
info@magnetawan.com



Magnetawan Lock System



How the Lock System Operates

A hand operated dam and lock system is located on the Magnetawan River to allow boats to travel upstream and downstream.

If a boat is "locking down," this means that they enter the lock on the upstream side and want to travel downstream.

- Boats come up to the lock and the lock gates can easily be opened because the water inside the tank is at the same elevation as the boat.
- Once all boats are in the lock and the gates are closed, the upstream valve gets closed and the valve on the downstream side gets opened to allow water to drain out of the lock. As the water drains, the boats float down.
- When the water level in the lock is the same as the lake on the downstream side, staff opens the gates and allows boats to travel out.

If a boat is "locking up," this means the upper valve gets opened to let water into the lock, raising boats up until the water level in the lock is at the same elevation as the upstream side.



Lock Operating Hours

↓ DOWN TO AHMIC LAKE
10:00 AM
12:00 PM
2:00 PM
4:00 PM
6:00 PM

↑ UP TO LAKE CECEBE
10:30 AM
12:30 PM
2:30 PM
4:30 PM
6:30 PM

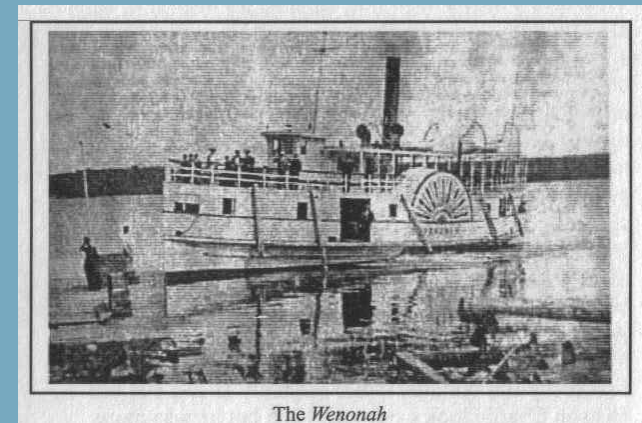
OPEN DAILY FROM THE
LAST WEEKEND IN JUNE
TO LABOUR DAY WEEKEND



History of the Lock

Between 1883-1886, the Ontario Government built the first lock system in Magnetawan. It was built with stone-filled timber cribwork that measured 112 by 28 feet. The lock raised or lowered boat steamers about ten feet, allowing them to run between Ahmic Harbour, 10 miles below Magnetawan, and Burk's Falls, 20 miles above it. The lock was later replaced in 1911 by the concrete structure you see today.

In the quarter century following the lock completion, a total of 704 passages were made through the lock each season. Notable among those ships were the "Wenonah" (1886), "Glenrosa" (1891), "Wanita" (1896), "Glenada" (1904), and "Armour" (1906). The "Mike," was the last steamship to ply these waters and was removed from the river around 1934.



The Wenonah