

**THE CORPORATION OF THE MUNICIPALITY OF MAGNETAWAN**

**BY-LAW NO. 2016 - 10**

**Being a By-law to amend By-law No. 2001-26, as amended, the Zoning By-law for the Corporation of the Municipality of Magnetawan with respect to lands located in Part of Lot 19, Concession 3, in the former geographic Township of Croft, now in the Municipality of Magnetawan, Plan 42R-20119 Parts 2,3,5 and 6 and municipally known as 1516 Ahmic Lake Road, Municipality of Magnetawan.**

**WHEREAS** the Council of the Corporation of the Municipality of Magnetawan is empowered to pass By-laws to regulate the use of land pursuant to Section 34 of the Planning Act, R.S.O. 1990;

**AND WHEREAS** the owner of the subject lands has filed an application with the Municipality of Magnetawan to amend By-law 2001-26 as amended;

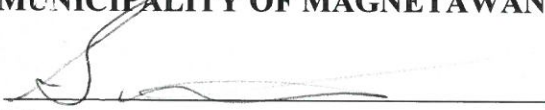
**NOW THEREFORE** the Council of the Corporation of the Municipality of Magnetawan enacts as follows:


1. Schedule 'A1', to Zoning By-law No. 2001-26 as amended, is further amended by zoning a portion of lands legally described as Part of Lot 19, Concession 3, Plan 42R-20119, Parts 2,3,5 and 6 in the former Township of Croft, now in the Municipality of Magnetawan and municipally known as 1516 Ahmic Lake Road, Municipality of Magnetawan from the Extractive Industrial (MX) Zone to the Shoreline Residential Exception RS-23 Zone as shown on Schedule 'A-1' attached forming part of this By-law.
2. One 25m<sup>2</sup> floating platform per lot is permitted. The entire floating platform and canoe dock will extend out into the marsh a maximum of 15 metres from the shoreline. The floating platform will be attached to the shoreline from which would extend a 2 metre wide by 10 metre long, steel-pile supported dock suitable for the launching of non-motorized watercraft to access the marsh environment.
3. To prevent harm to fish habitat, the following standard protocols and procedures shall be followed, as included in the December 2015 Supplementary Fish Habitat Impact Assessment prepared by Blythe and Associates :
  - a. Seasonal-residential building envelopes shall be sited at least 15 metres back from the edge of the lake;
  - b. Any fill materials used to elevate the building site shall be protected with adequate sediment and erosion control measures that shall be maintained until the areas of disturbed and unconsolidated soils are re-vegetated or stabilized by other permanent methods; and
  - c. A shoreline vegetation buffer zone of 5 metres shall be maintained in a natural state, save for periodic pruning of brush to facilitate access to the non-motorized watercraft floating platform.
4. In all other respects, the provisions of By-law 2001-26, as amended shall apply.

This By-law take effect on the date of its passage, subject to the provisions of Section 34 (30) and (31) of the Planning Act (Ontario).

**READ A FIRST, SECOND, AND THIRD TIME**, passed, signed and the Seal of the Corporation affixed hereto, this 23<sup>rd</sup> day of March, 2016

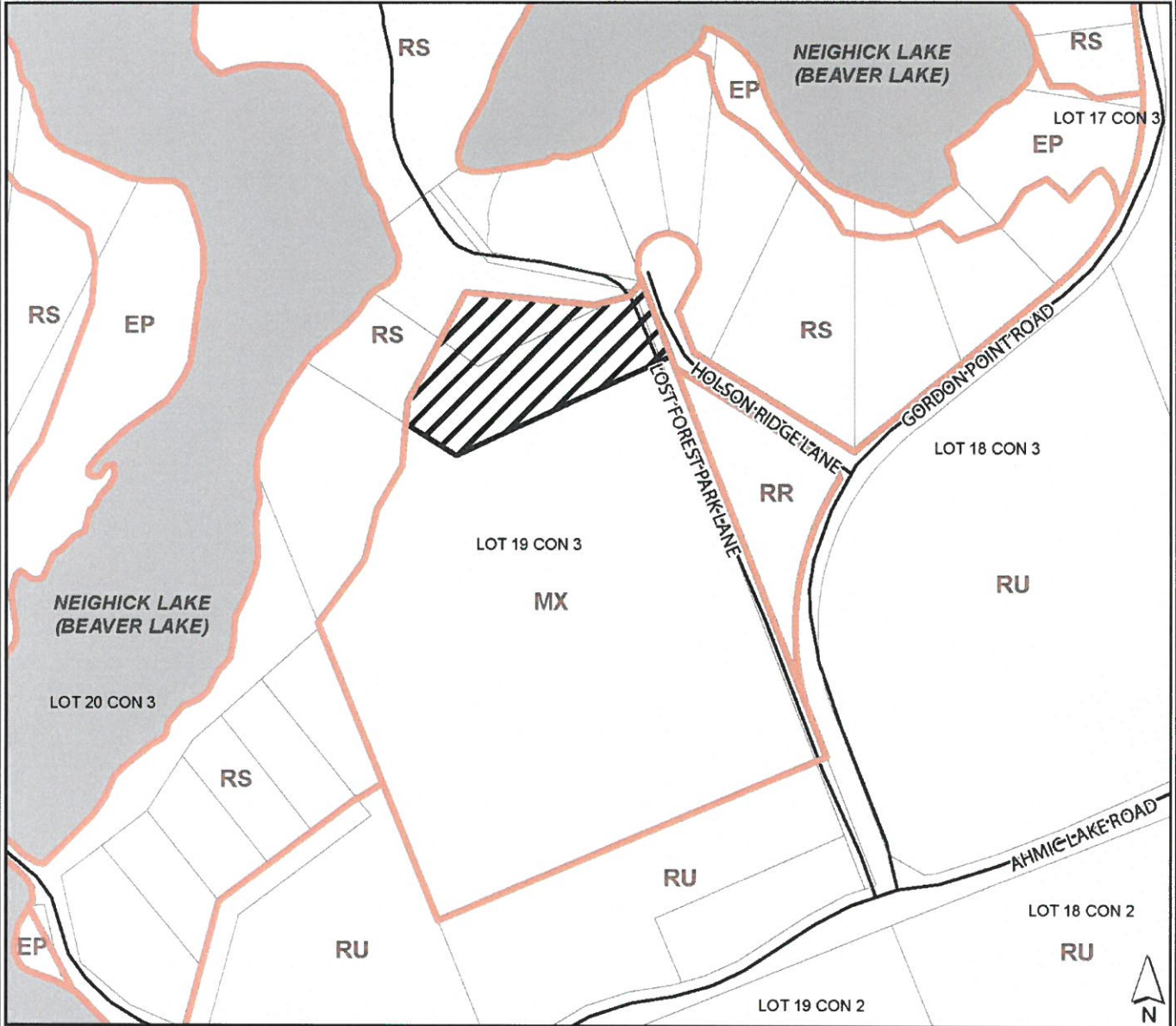
**THE CORPORATION OF THE  
MUNICIPALITY OF MAGNETAWAN**

  
\_\_\_\_\_  
Mayor

  
\_\_\_\_\_  
Clerk-Administrator


# Schedule 'A-1'

Part Lot 19, Concession 3  
GEOGRAPHIC TOWNSHIP OF CROFT  
Municipality of Magnetawan



Lands to be rezoned from the Extractive Industrial (MX) Zone  
to the Shoreline Residential Exception Twenty Three (RS-23) Zone

This is Schedule 'A-1' to Zoning By-law 2016-10  
Passed this 23<sup>rd</sup> day of March, 2016

  
Mayor

  
Clerk-Administrator