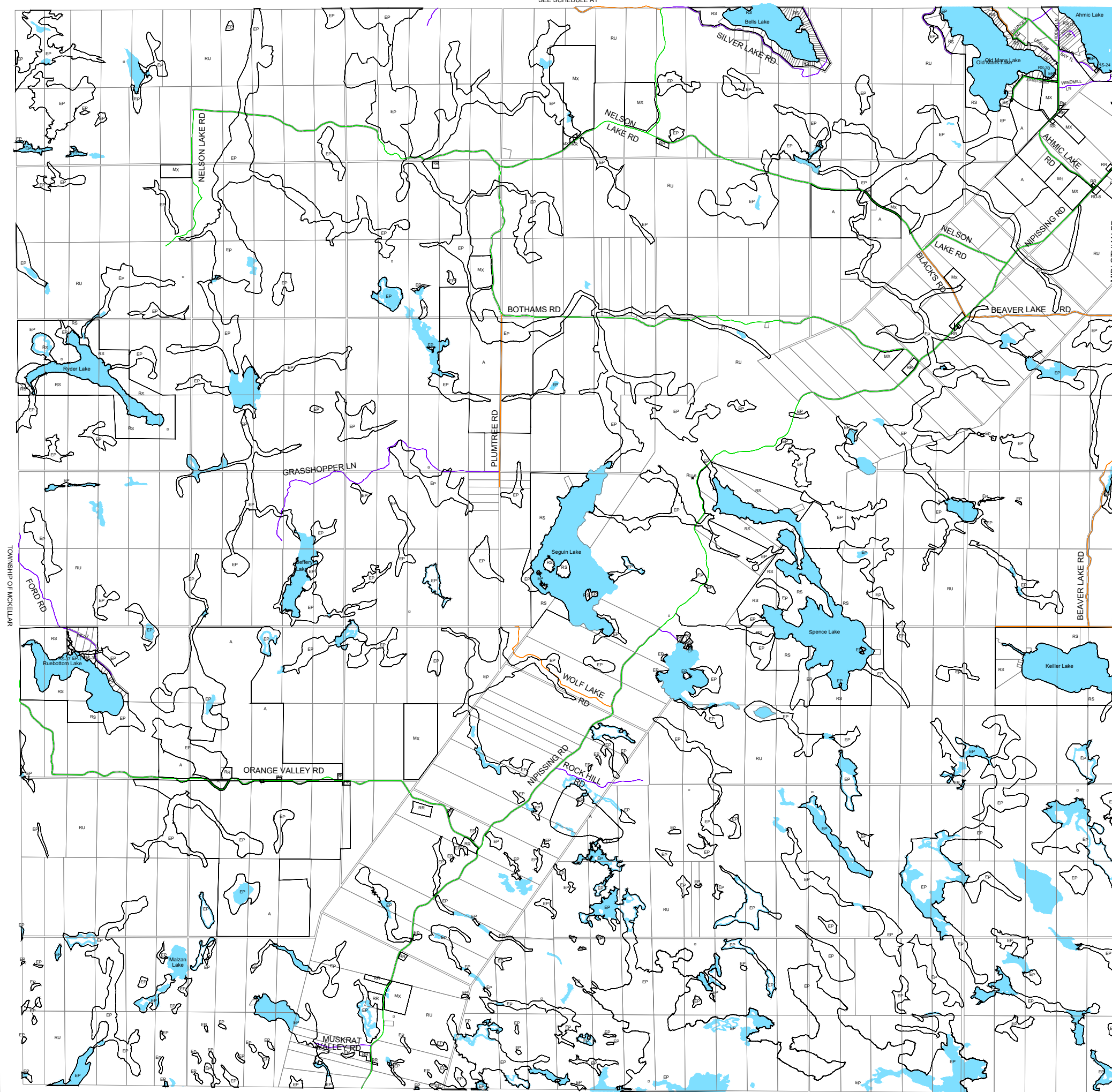
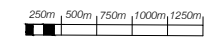


Municipality of Magnetawan Zoning By-law Schedule A3 Township of Spence



- Zone Boundary**
- A Agricultural
 - CG General Commercial
 - CT Tourist Commercial
 - CV Village Commercial
 - EP Environmental Protection
 - I Institutional
 - M1 General Industrial
 - MD Disposal Industrial
 - MX Extractive Industrial
 - OS Open Space
 - RM Multiple Residential
 - RR Rural Residential
 - RS Shoreline Residential
 - RU Rural
 - RV Village Residential
- Roads**
- Provincial
 - Municipal - Year Round Maintained
 - Municipal - Seasonally Maintained
 - Private
 - Other - Municipally Onwed/Private Maintained

Date: November 2024



Note: The base information on this plan was prepared from a variety of map sources and was used by permission of the Municipality of Magnetawan. It is not a high plan of survey. For precise location of plan features recourse should be had to the original source data.

Digital Map Created By:
CGIS Spatial Solutions
52 South Street
Perth, ON K7H 2G7
TEL: 613-364-4321
www.cgis.com

TOWNSHIP OF SEGUIN

TOWNSHIP OF MCMURRICH-MONTEITH

TOWNSHIP OF RVERSON

TOWNSHIP OF MCKELLAR

SEE SCHEDULE A1